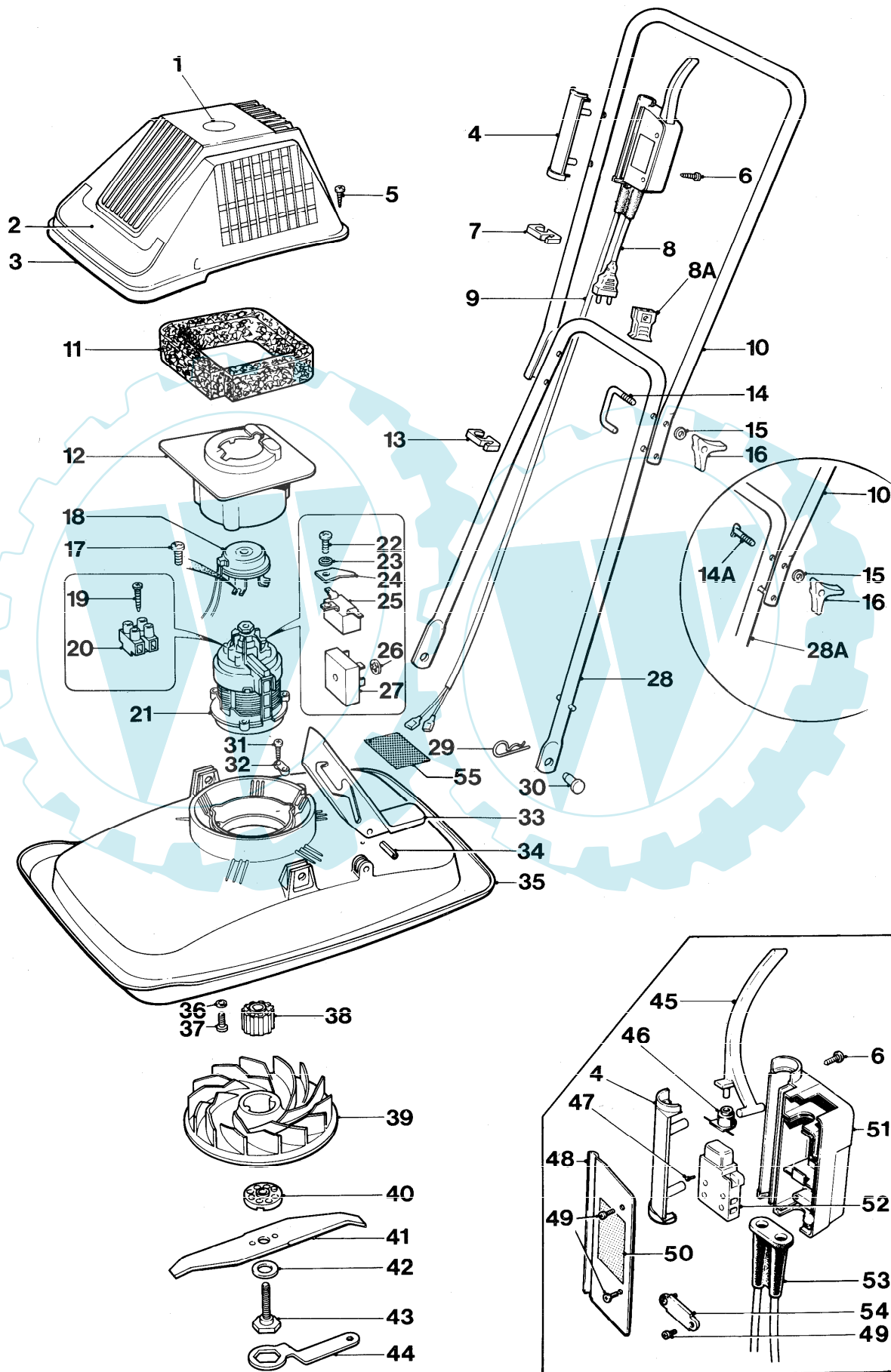


Flymo

E30-S 9635131





# E30-S 9635131

KEY No.	PART No.	DESCRIPTION	QUANTITY	COMMENTS/ APPLICATION	KEY No.	PART No.	DESCRIPTION	QUANTITY	COMMENTS/ APPLICATION
1	5136637-00/5	LABEL AUTO STOP	1	NLA USE 5137510-00/3	32	5140705-00/4	CABLE CLAMP	1	
2	5126438-00/0	LABEL E30 'S'	1		33	5116388-01/7	LEVER UP STOP	1	ALT USE 5116388-04/1
3	5106150-01/3	COWL	1	NLA USE 5106150-02/1	34	5147029-01/0	ROLL PIN	1	
4	5126290-00/5	SWITCHBOX RETAINER 16mm	1		35	5106173-00/7	HOOD LESS UP STOP	1	ALT USE 5147856-00/8
	5141611-01/1	LABEL CUT OUT	1	A.CH.		5147856-00/8	HOOD C/W UP STOP	1	ALT USE 5147856-02/4
	5141611-04/5	LABEL CUT OUT	1	DK.N.F.B.NL.	36	5140266-00/7	WASHER	3	
	5141611-03/7	LABEL CUT OUT	1	SF.	37	5141585-00/9	SCREW	3	
	5141611-09/4	LABEL CUT OUT	1	S.SF.	38	5126358-00/0	IMPELLER INSERT	1	
	5141611-05/2	LABEL CUT OUT	1	F.B.NL.CH.	39	5116745-00/0	IMPELLER	1	
	5147822-01/8	LABEL CUT OUT	1	D.	40	5136668-01/8	BLADE SPACER PEGGED	3	
	5141611-07/8	LABEL CUT OUT	1	I.	41	5126439-00/8	BLADE 30cm	1	
	5141611-00/3	LABEL CUT OUT	1	O/S.E.P.EI.	42	5140516-00/5	ANTI FRICTION WASHER (PTFE)	1	
5	5146824-00/7	SCREW	4	ALT USE 5147665-00/4	43	5136242-01/2	BLADE BOLT	1	
6	5146672-00/0	SCREW GKN POLYIMATE	2		44	5130127-00/3	SPANNER	1	
7	5140482-00/0	CABLE CLIP SMALL	1		45	5136182-01/0	LEVER SWITCH	1	
8	5136621-00/9	LEAD TERMINAL C/W PLUG	1	GB.	46	5130406-01/9	SEAL CONE	1	
	5147000-01/1	LEAD TERMINAL .5m	1	F.B.NL.DK.I.SF.A.N.	47	5141605-00/5	SCREW	4	
	5146475-08/1	LEAD TERMINAL C/W PLUG	1	SF.	48	5116495-00/2	SWITCHBOX COVER	1	
	5147001-03/5	LEAD TERMINAL 15.5m x .75mm	1	GB.O/S.E.P.EI.	49	5146672-00/0	SCREW GKN POLYIMATE	4	
	5147213-00/2	LEAD TERMINAL C/W ELCB	1	S.	50	5147900-00/4	LABEL SWITCH LOCK-OFF	1	
	5147000-03/7	LEAD TERMINAL .5m	1	CH.	51	5116494-03/9	SWITCHBOX BODY 16mm	1	
	5136662-00/3	SOCKET FEMALE 10 AMP	1		52	5136674-01/6	SWITCH ON/OFF LOCK OFF	1	KOPP 2412.04 OR 2412.13 GB.
9	5147001-01/9	LEAD INTERNAL	1	ALT USE 5147001-24/1		5126503-01/9	SWITCH ON/OFF LOCK/OFF THERMAL	1	KOPP 2401.30
	5146989-03/2	LEAD INTERNAL	1	SF.	53	5141584-01/0	SLEEVE PROTECTION	1	
	5147001-12/6	LEAD INTERNAL	1	CH.	54	5146616-00/7	CLAMP CABLE	1	
10	5126242-03/0	HANDLE UPPER PLASTIC COATED	1			5136507-00/0	LABEL WARNING	1	D.CH.A.
11	5146580-00/5	FILTER	1			5136364-00/6	LABEL WARNING	1	N.
12	5116524-03/3	FILTER SUPPORT	1			5146466-00/7	LABEL WARNING	1	N.DK.F.B.
13	5140863-01/9	CABLE CLIP LARGE	1			5136361-00/2	LABEL WARNING	1	SF.
14	5147542-00/4	J BOLT	2			5146464-00/2	LABEL WARNING	1	F.B.NL.CH.
14A	5140607-00/2	BOLT HANDLE	2	LATER PRODUCED PRODUCTS		5146465-00/9	LABEL WARNING	1	SF.B.NL.
15	5140266-00/7	WASHER	2			5146486-00/5	LABEL WARNING	1	I.
16	5140690-00/8	KNOB WING	2			5146516-00/9	LABEL WARNING	1	E.P.EI.O/S.
17	5147114-00/2	SCREW TAPTITE UNC 3/8" LNG	4			5146504-00/5	LABEL WARNING	1	S.
18	5126318-02/0	BRAKE	1	USE 5126318-82/2		5147227-00/2	LABEL WARNING (ELCB)	1	S.
19	7295231-01/8	SCREW	1						
20	7627202-57/0	TERMINAL BLOCK	1						
21	5136641-03/1	MOTOR 240v C/W ADAPTOR	1	COMPLETE WITH RECTIFIER					
	5136641-04/9	MOTOR 220v C/W ADAPTOR	1	COMPLETE WITH RECTIFIER					
22	7241293-61/7	SCREW THREAD FORMING	1						
23	7352136-51/4	LOCKWASHER	1						
24	113721-00/5	CLIP	1						
25	113030-01/9	SUPPRESSOR 0.15 MF	1						
26	140785-01/5	CAPTIVE WASHER	1						
27	322814-00/5	RECTIFIER	1						
28	5126307-00/7	HANDLE LOWER	1						
28A	5126394-00/5	HANDLE LOWER	1	LATER PRODUCED PRODUCTS					
29	5140423-00/4	PIN RETAINING	2						
30	5140092-01/5	PIN LOCKING	2	ALT USE 5140092-00/7					
31	5146941-00/9	SCREW HI-LO	2						
					55	5146467-00/5	LABEL WARNING	1	GB.O/S.E.P.EI.

Keys 45-53 are not applicable to product 9635131-09  
These are replaced by Schulte Switchbox 5126500-03/1

### PRODUCT VARIANT

9635131-03 A.	9635131-08 F.B.NL.	9635131-16 O/S.E.P.EI.	9635131-22 CH.
9635131-06 DK.N.	9635131-09 D.	9635131-21 S.	9635131-51 GB.
9635131-07 SF.	9635131-11 I.		

Where no application details are shown the part applies to all countries.